



Actual Shot



BRIGADE

Building Positive Experiences

**READY HOMES.
READYMADE LIFESTYLE.**

BRIGADE
NORTHBRIDGE
NEO

KOGILU MAIN ROAD, JAKKUR

LOCATION MAP

Key Landmark	*Distance in Minutes
International Airport	20
Manyata Tech Park	15
KIADB IT Park	15

Educational Institutes	*Distance in Minutes
DPS	10
Vidyashilp Academy	15
REVA College	5

Shopping Malls	*Distance in Minutes
Elements Mall	15
RMZ Galleria	15
Esteem Mall	20

Hospitals	*Distance in Minutes
Columbia Asia	20
Aster Hospital	20
Regal Hospital	5



Indicative map, not to scale

MASTER PLAN

BRIGADE
NORTH RIDGE
NEO

KOGILU MAIN ROAD, JAKKUR

LEGEND

- | | | |
|--------------------|--------------------------|---------------------------|
| 01. ENTRANCE | 07. TENNIS COURT | 13. REFLEXOLOGY PATHWAY |
| 02. DROP OFF PLAZA | 08. CHILDREN'S PLAY AREA | 14. PRESERVED TREE GROOVE |
| 03. DRIVEWAY | 09. SENIOR CITIZENS AREA | 15. CRICKET PRACTICE NET |
| 04. CAR PARKING | 10. GOLF PUTTING | 16. HALF BASKETBALL COURT |
| 05. PARTY LAWN | 11. OUTDOOR GYM | 17. SKATING ARENA |
| 06. PLAY LAWN | 12. SWIMMING POOL | 18. JOGGING TRACK |



PARK AND OPEN SPACE - - - - -
CIVIC AMENITIES - - - - -

The information depicted herein viz., master plans, floor plans, furniture layout, fittings, illustrations, specifications, designs, dimensions, rendered views, colours, amenities and facilities etc., are subject to change without notifications as may be required by the relevant authorities or the developer's architect, and cannot form part of an offer or contract. Whilst every care is taken in providing this information, the Developer cannot be held liable for variations. All illustrations and pictures are artist's impression only. The information are subject to variations, additions, deletions, substitutions and modifications as may be recommended by the company's architect and/or the relevant approving authorities. The Developer is wholly exempt from any liability on account of any claim in this regard. (1 square metre = 10.764 square feet). E & OE.

All dimensions and calculations are done in metric system (M/ Sq.m), and imperial system (Ft/ Sq.ft) shown is for reference only.

PROJECT VIEWS



READY
Homes
READY
Amenities





READY
Homes
READY
Amenities



**UNIT
DISTRIBUTION
PLAN**

GROUND FLOOR PLAN



The information depicted herein viz., master plans, floor plans, furniture layout, fittings, illustrations, specifications, designs, dimensions, rendered views, colours, amenities and facilities etc., are subject to change without notifications as may be required by the relevant authorities or the developer's architect, and cannot form part of an offer or contract. Whilst every care is taken in providing this information, the Developer cannot be held liable for variations. All illustrations and pictures are artist's impression only. The information are subject to variations, additions, deletions, substitutions and modifications as may be recommended by the company's architect and/or the relevant approving authorities. The Developer is wholly exempt from any liability on account of any claim in this regard. (1 square metre = 10.764 square feet). E & OE.

All dimensions and calculations are done in metric system (M/ Sq.m), and imperial system (Ft/ Sq.ft) shown is for reference only.

FIRST FLOOR PLAN



The information depicted herein viz., master plans, floor plans, furniture layout, fittings, illustrations, specifications, designs, dimensions, rendered views, colours, amenities and facilities etc., are subject to change without notifications as may be required by the relevant authorities or the developer's architect, and cannot form part of an offer or contract. Whilst every care is taken in providing this information, the Developer cannot be held liable for variations. All illustrations and pictures are artist's impression only. The information are subject to variations, additions, deletions, substitutions and modifications as may be recommended by the company's architect and/or the relevant approving authorities. The Developer is wholly exempt from any liability on account of any claim in this regard. (1 square metre = 10.764 square feet). E & OE.

All dimensions and calculations are done in metric system (M/ Sq.m), and imperial system (Ft/ Sq.ft) shown is for reference only.

2ND & 3RD FLOOR PLAN



The information depicted herein viz., master plans, floor plans, furniture layout, fittings, illustrations, specifications, designs, dimensions, rendered views, colours, amenities and facilities etc., are subject to change without notifications as may be required by the relevant authorities or the developer's architect, and cannot form part of an offer or contract. Whilst every care is taken in providing this information, the Developer cannot be held liable for variations. All illustrations and pictures are artist's impression only. The information are subject to variations, additions, deletions, substitutions and modifications as may be recommended by the company's architect and/or the relevant approving authorities. The Developer is wholly exempt from any liability on account of any claim in this regard. (1 square metre = 10.764 square feet). E & OE.

All dimensions and calculations are done in metric system (M/ Sq.m), and imperial system (Ft/ Sq.ft) shown is for reference only.

4TH FLOOR PLAN



The information depicted herein viz., master plans, floor plans, furniture layout, fittings, illustrations, specifications, designs, dimensions, rendered views, colours, amenities and facilities etc., are subject to change without notifications as may be required by the relevant authorities or the developer's architect, and cannot form part of an offer or contract. Whilst every care is taken in providing this information, the Developer cannot be held liable for variations. All illustrations and pictures are artist's impression only. The information are subject to variations, additions, deletions, substitutions and modifications as may be recommended by the company's architect and/or the relevant approving authorities. The Developer is wholly exempt from any liability on account of any claim in this regard. (1 square metre = 10.764 square feet). E & OE.

All dimensions and calculations are done in metric system (M/ Sq.m), and imperial system (Ft/ Sq.ft) shown is for reference only.

TYPICAL 5TH TO 11TH FLOOR PLAN



The information depicted herein viz., master plans, floor plans, furniture layout, fittings, illustrations, specifications, designs, dimensions, rendered views, colours, amenities and facilities etc., are subject to change without notifications as may be required by the relevant authorities or the developer's architect, and cannot form part of an offer or contract. Whilst every care is taken in providing this information, the Developer cannot be held liable for variations. All illustrations and pictures are artist's impression only. The information are subject to variations, additions, deletions, substitutions and modifications as may be recommended by the company's architect and/or the relevant approving authorities. The Developer is wholly exempt from any liability on account of any claim in this regard. (1 square metre = 10.764 square feet). E & OE.

All dimensions and calculations are done in metric system (M/ Sq.m), and imperial system (Ft/ Sq.ft) shown is for reference only.

UNIT PLANS

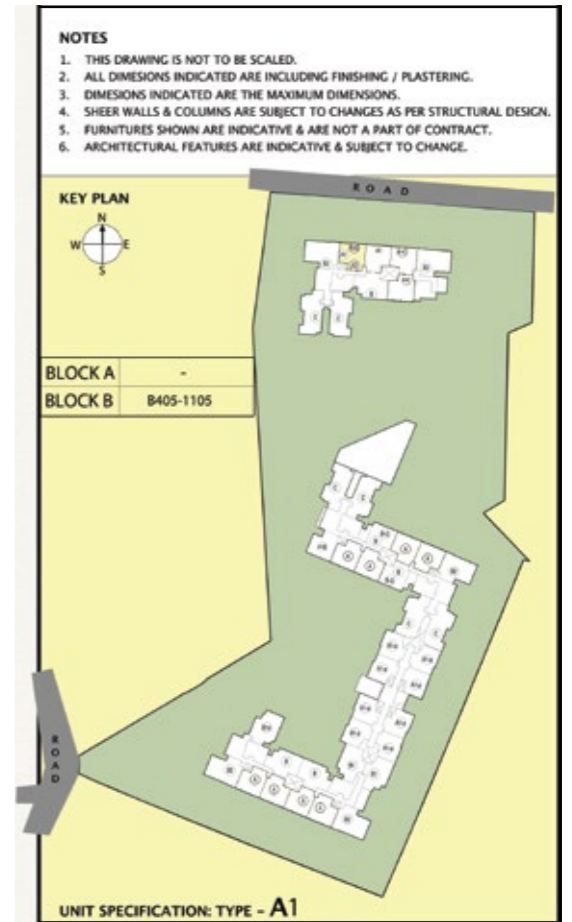
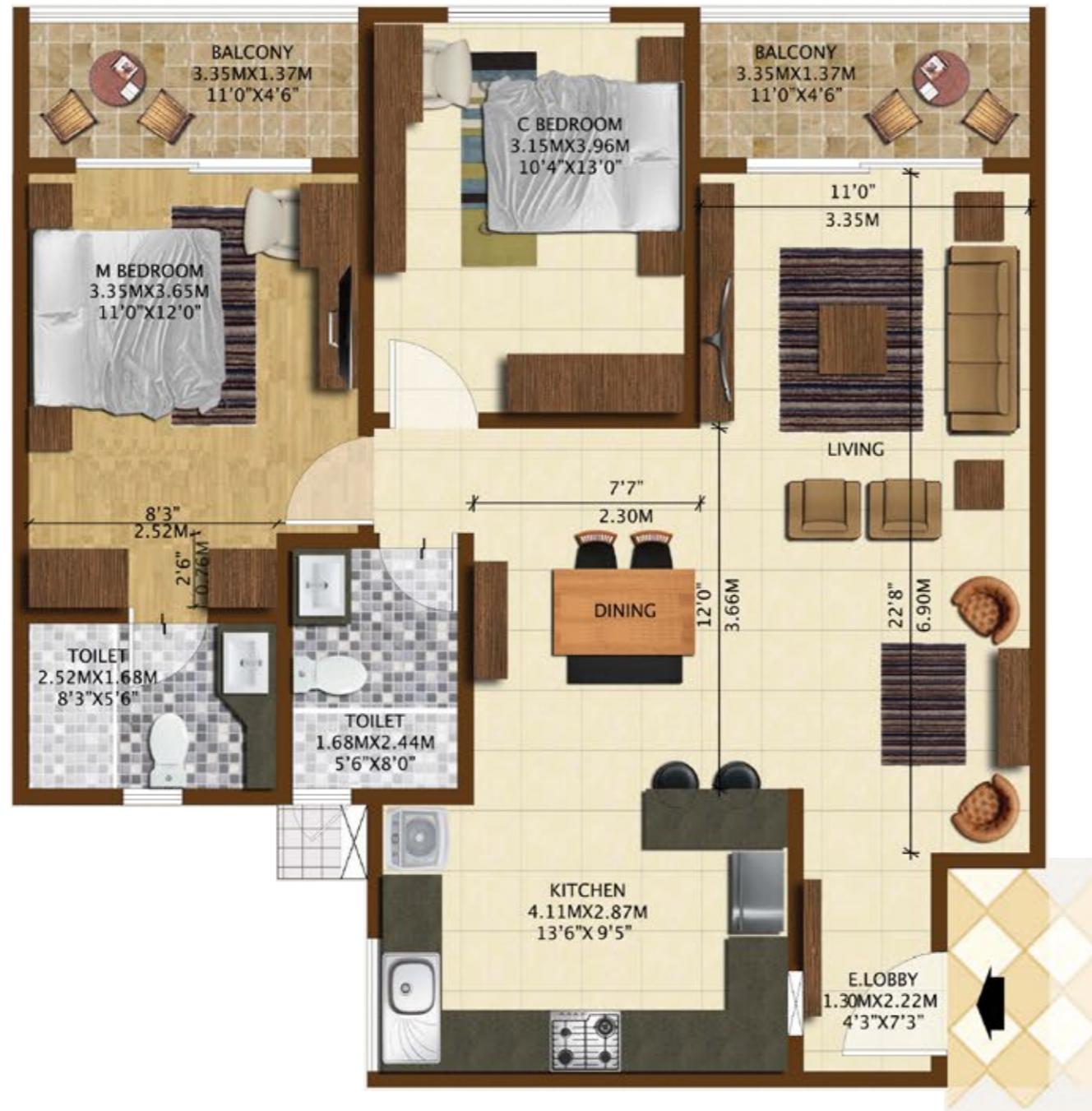
2 BHK

SBA: 1386 - 1496 (Sq.ft.)

3 BHK

SBA: 1691 - 1898 (Sq.ft.)

TYPICAL 2 BHK UNIT

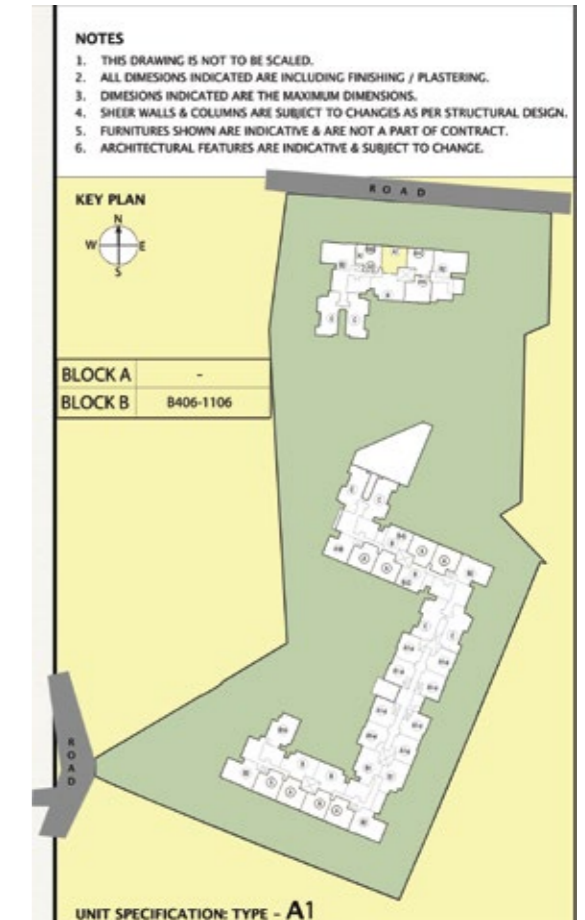


SUPER BUILT-UP AREA
128.76 Sq.m (1,386 Sq.ft.)
CARPET AREA
85.10 Sq.m (916.01 Sq.ft.)
BALCONY CARPET AREA
9.16 sq.m (98.59 Sq.ft.)

The information depicted herein viz., master plans, floor plans, furniture layout, fittings, illustrations, specifications, designs, dimensions, rendered views, colours, amenities and facilities etc., are subject to change without notifications as may be required by the relevant authorities or the developer's architect, and cannot form part of an offer or contract. Whilst every care is taken in providing this information, the Developer cannot be held liable for variations. All illustrations and pictures are artist's impression only. The information are subject to variations, additions, deletions, substitutions and modifications as may be recommended by the company's architect and/or the relevant approving authorities. The Developer is wholly exempt from any liability on account of any claim in this regard. (1 square metre = 10.764 square feet). E & OE.

All dimensions and calculations are done in metric system (M/ Sq.m), and imperial system (Ft/ Sq.ft) shown is for reference only.

TYPICAL 2 BHK UNIT



SUPER BUILT-UP AREA
128.76 Sq.m (1,386 Sq.ft.)

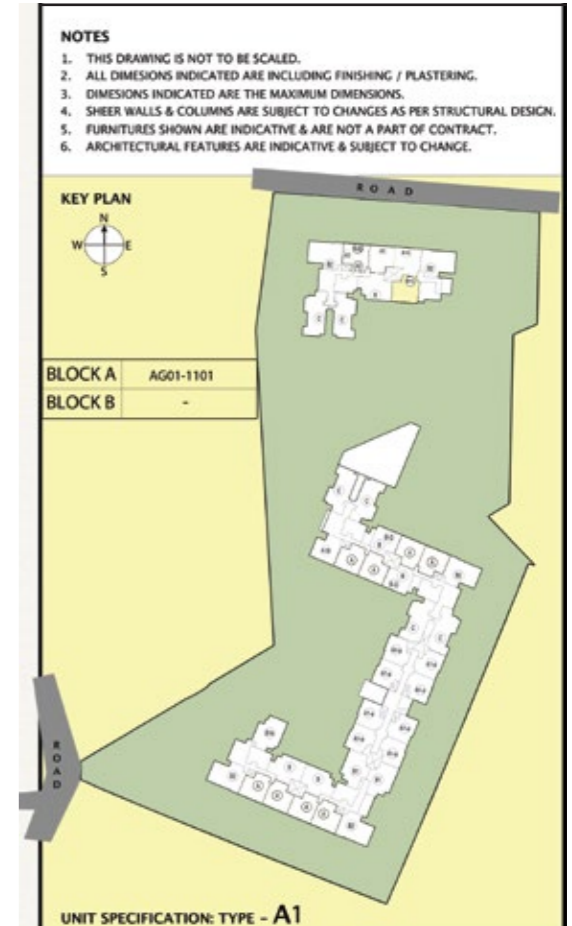
CARPET AREA
85.10 Sq.m (916.01 Sq.ft.)

BALCONY CARPET AREA
9.16 sq.m (98.59 Sq.ft.)

The information depicted herein viz., master plans, floor plans, furniture layout, fittings, illustrations, specifications, designs, dimensions, rendered views, colours, amenities and facilities etc., are subject to change without notifications as may be required by the relevant authorities or the developer's architect, and cannot form part of an offer or contract. Whilst every care is taken in providing this information, the Developer cannot be held liable for variations. All illustrations and pictures are artist's impression only. The information are subject to variations, additions, deletions, substitutions and modifications as may be recommended by the company's architect and/or the relevant approving authorities. The Developer is wholly exempt from any liability on account of any claim in this regard. (1 square metre = 10.764 square feet). E & OE.

All dimensions and calculations are done in metric system (M/ Sq.m), and imperial system (Ft/ Sq.ft) shown is for reference only.

TYPICAL 2 BHK UNIT



SUPER BUILT-UP AREA
128.76 Sq.m (1,386 Sq.ft.)

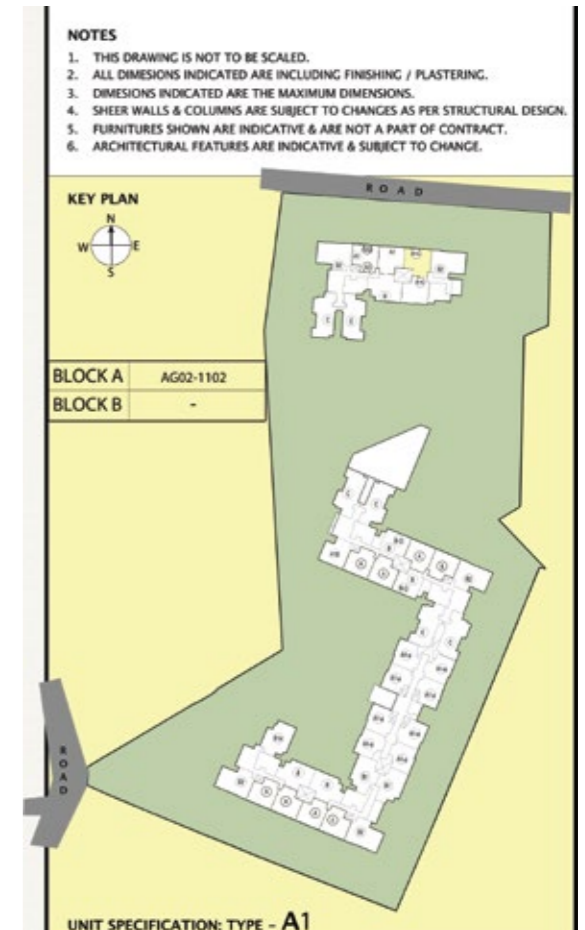
CARPET AREA
85.10 Sq.m (916.01 Sq.ft.)

BALCONY CARPET AREA
9.16 sq.m (98.59 Sq.ft.)

The information depicted herein viz., master plans, floor plans, furniture layout, fittings, illustrations, specifications, designs, dimensions, rendered views, colours, amenities and facilities etc., are subject to change without notifications as may be required by the relevant authorities or the developer's architect, and cannot form part of an offer or contract. Whilst every care is taken in providing this information, the Developer cannot be held liable for variations. All illustrations and pictures are artist's impression only. The information are subject to variations, additions, deletions, substitutions and modifications as may be recommended by the company's architect and/or the relevant approving authorities. The Developer is wholly exempt from any liability on account of any claim in this regard. (1 square metre = 10.764 square feet). E & OE.

All dimensions and calculations are done in metric system (M/ Sq.m), and imperial system (Ft/ Sq.ft) shown is for reference only.

TYPICAL 2 BHK UNIT



SUPER BUILT-UP AREA
128.76 Sq.m (1,386 Sq.ft.)

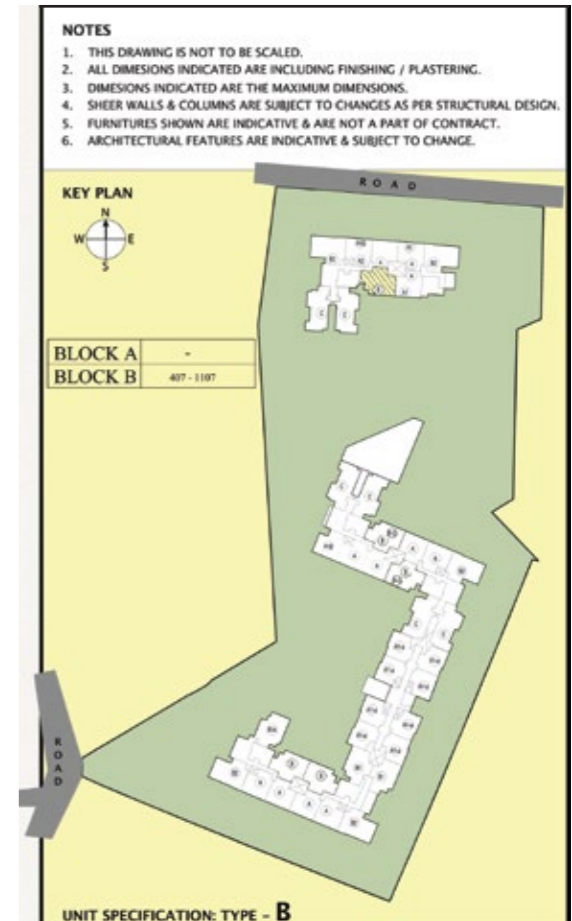
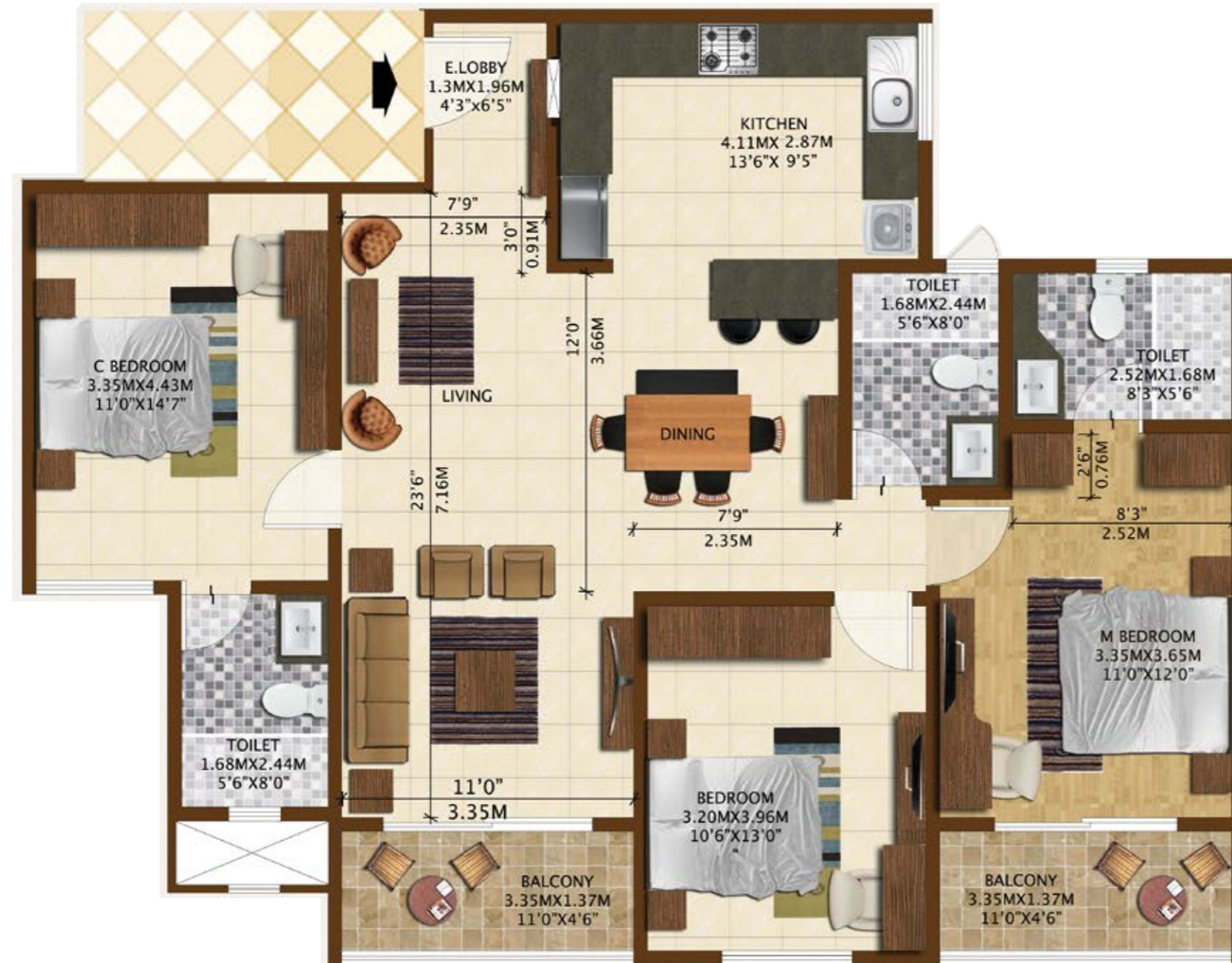
CARPET AREA
85.10 Sq.m (916.01 Sq.ft.)

BALCONY CARPET AREA
9.16 sq.m (98.59 Sq.ft.)

The information depicted herein viz., master plans, floor plans, furniture layout, fittings, illustrations, specifications, designs, dimensions, rendered views, colours, amenities and facilities etc., are subject to change without notifications as may be required by the relevant authorities or the developer's architect, and cannot form part of an offer or contract. Whilst every care is taken in providing this information, the Developer cannot be held liable for variations. All illustrations and pictures are artist's impression only. The information are subject to variations, additions, deletions, substitutions and modifications as may be recommended by the company's architect and/or the relevant approving authorities. The Developer is wholly exempt from any liability on account of any claim in this regard. (1 square metre = 10.764 square feet). E & OE.

All dimensions and calculations are done in metric system (M/ Sq.m), and imperial system (Ft/ Sq.ft) shown is for reference only.

TYPICAL 3 BHK UNIT

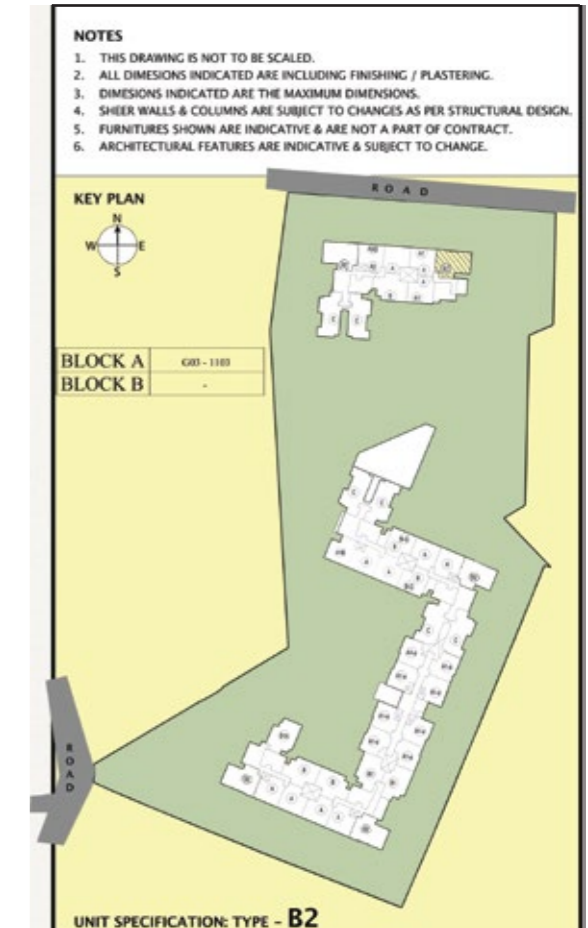
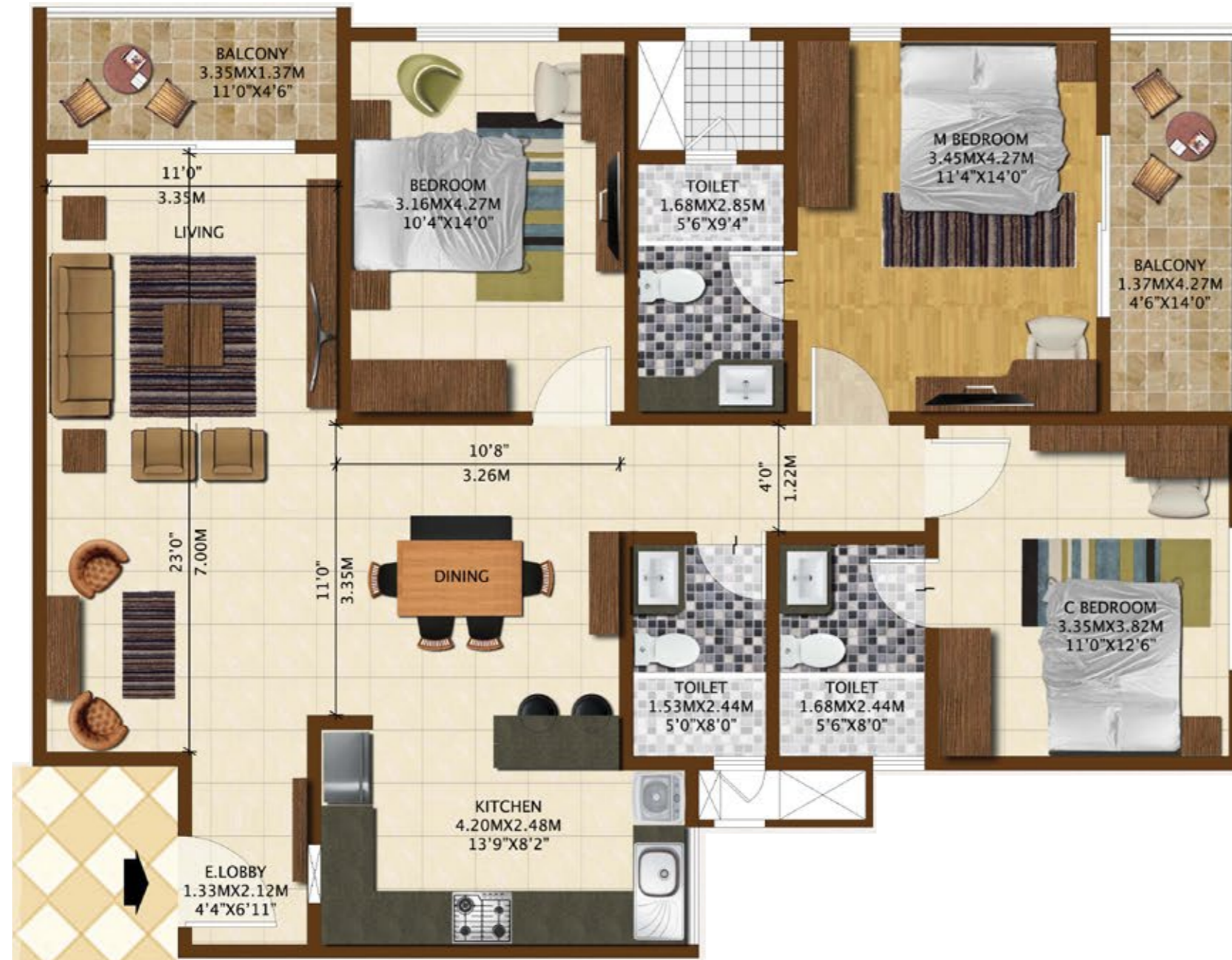


SUPER BUILT-UP AREA
157.14 Sq.m (1,691 Sq.ft.)
CARPET AREA
106.17 Sq.m (1,142.81 Sq.ft.)
BALCONY CARPET AREA
9.16 sq.m (98.59 Sq.ft.)

The information depicted herein viz., master plans, floor plans, furniture layout, fittings, illustrations, specifications, designs, dimensions, rendered views, colours, amenities and facilities etc., are subject to change without notifications as may be required by the relevant authorities or the developer's architect, and cannot form part of an offer or contract. Whilst every care is taken in providing this information, the Developer cannot be held liable for variations. All illustrations and pictures are artist's impression only. The information are subject to variations, additions, deletions, substitutions and modifications as may be recommended by the company's architect and/or the relevant approving authorities. The Developer is wholly exempt from any liability on account of any claim in this regard. (1 square metre = 10.764 square feet). E & OE.

All dimensions and calculations are done in metric system (M/ Sq.m), and imperial system (Ft/ Sq.ft) shown is for reference only.

TYPICAL 3 BHK UNIT



SUPER BUILT-UP AREA
166.82 Sq.m (1,796 Sq.ft.)

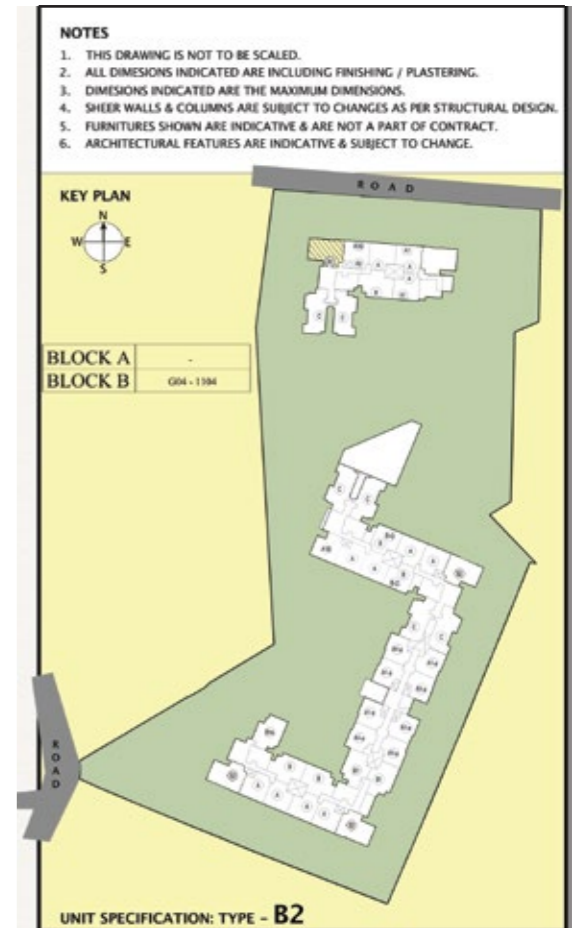
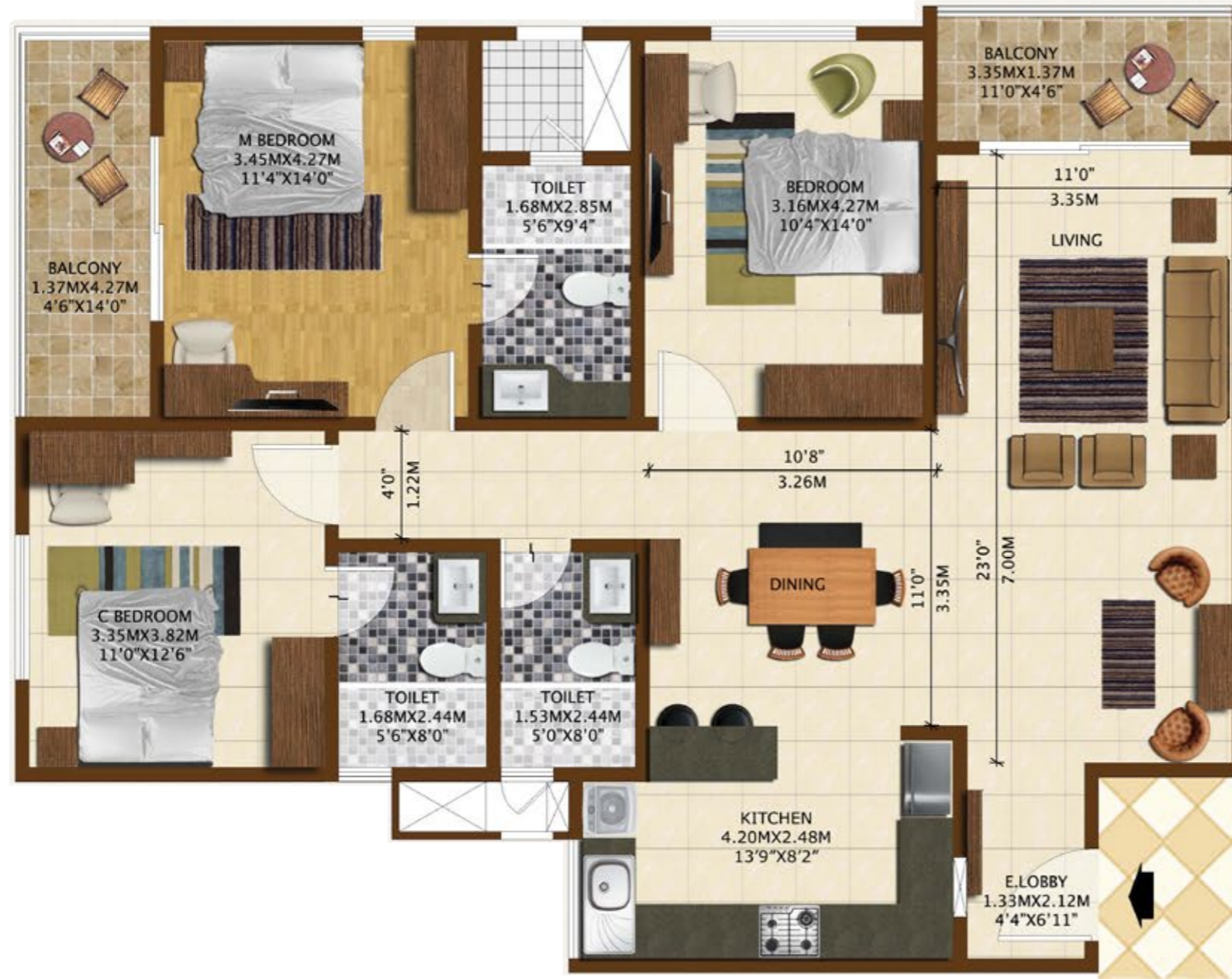
CARPET AREA
110.94 Sq.m (1,194.15 Sq.ft.)

BALCONY CARPET AREA
10.42 sq.m (112.16 Sq.ft.)

The information depicted herein viz., master plans, floor plans, furniture layout, fittings, illustrations, specifications, designs, dimensions, rendered views, colours, amenities and facilities etc., are subject to change without notifications as may be required by the relevant authorities or the developer's architect, and cannot form part of an offer or contract. Whilst every care is taken in providing this information, the Developer cannot be held liable for variations. All illustrations and pictures are artist's impression only. The information are subject to variations, additions, deletions, substitutions and modifications as may be recommended by the company's architect and/or the relevant approving authorities. The Developer is wholly exempt from any liability on account of any claim in this regard. (1 square metre = 10.764 square feet). E & OE.

All dimensions and calculations are done in metric system (M/ Sq.m), and imperial system (Ft/ Sq.ft) shown is for reference only.

TYPICAL 3 BHK UNIT



SUPER BUILT-UP AREA
166.82 Sq.m (1,796 Sq.ft.)

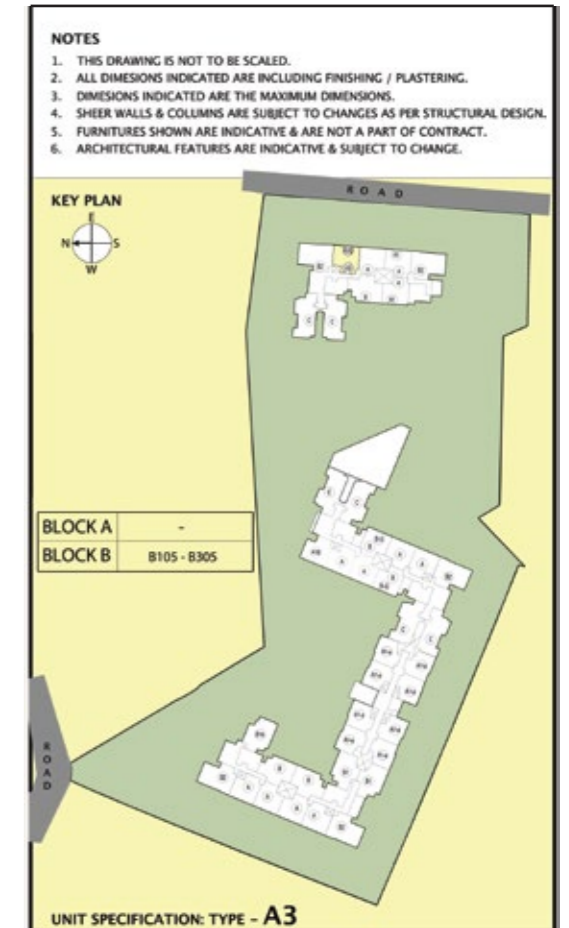
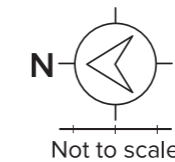
CARPET AREA
110.94 Sq.m (1,194.15 Sq.ft.)

BALCONY CARPET AREA
10.42 sq.m (112.16 Sq.ft.)

The information depicted herein viz., master plans, floor plans, furniture layout, fittings, illustrations, specifications, designs, dimensions, rendered views, colours, amenities and facilities etc., are subject to change without notifications as may be required by the relevant authorities or the developer's architect, and cannot form part of an offer or contract. Whilst every care is taken in providing this information, the Developer cannot be held liable for variations. All illustrations and pictures are artist's impression only. The information are subject to variations, additions, deletions, substitutions and modifications as may be recommended by the company's architect and/or the relevant approving authorities. The Developer is wholly exempt from any liability on account of any claim in this regard. (1 square metre = 10.764 square feet). E & OE.

All dimensions and calculations are done in metric system (M/ Sq.m), and imperial system (Ft/ Sq.ft) shown is for reference only.

TYPICAL 3 BHK UNIT



SUPER BUILT-UP AREA
167.19 Sq.m (1,800 Sq.ft.)

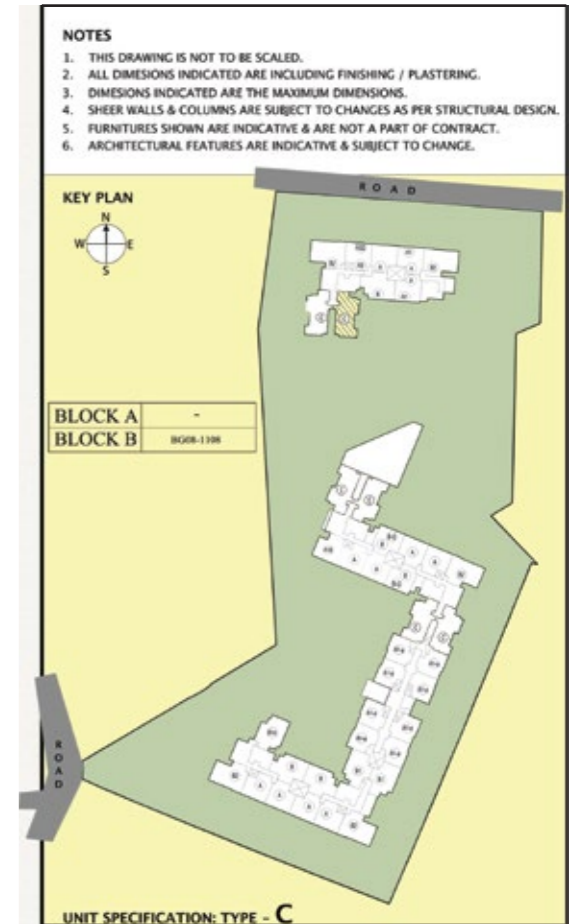
CARPET AREA
111.77 Sq.m (1,203.09 Sq.ft.)

BALCONY CARPET AREA
9.16 sq.m (98.59 Sq.ft.)

The information depicted herein viz., master plans, floor plans, furniture layout, fittings, illustrations, specifications, designs, dimensions, rendered views, colours, amenities and facilities etc., are subject to change without notifications as may be required by the relevant authorities or the developer's architect, and cannot form part of an offer or contract. Whilst every care is taken in providing this information, the Developer cannot be held liable for variations. All illustrations and pictures are artist's impression only. The information are subject to variations, additions, deletions, substitutions and modifications as may be recommended by the company's architect and/or the relevant approving authorities. The Developer is wholly exempt from any liability on account of any claim in this regard. (1 square metre = 10.764 square feet). E & OE.

All dimensions and calculations are done in metric system (M/ Sq.m), and imperial system (Ft/ Sq.ft) shown is for reference only.

TYPICAL 3 BHK UNIT



SUPER BUILT-UP AREA
176.32 Sq.m (1,898 Sq.ft.)

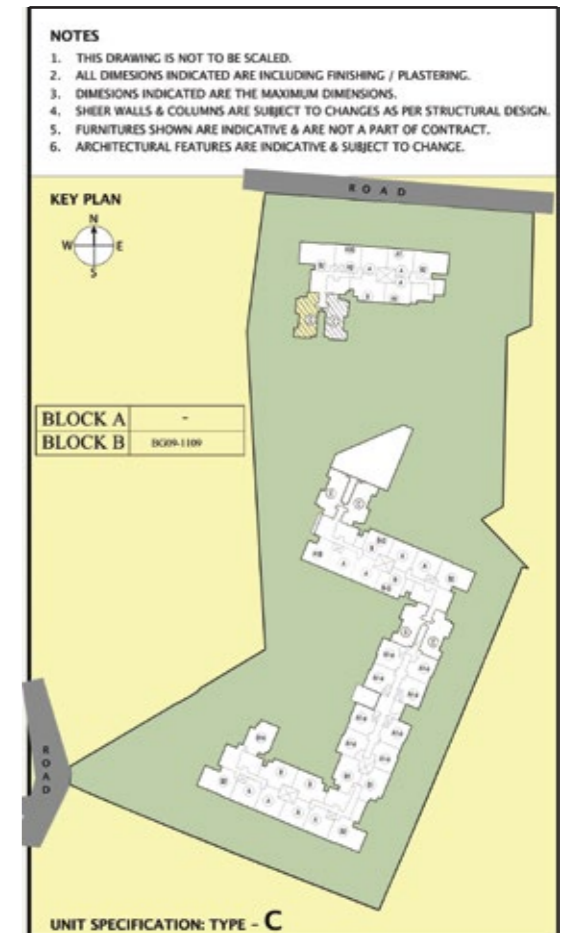
CARPET AREA
118.42 Sq.m (1,274.67 Sq.ft.)

BALCONY CARPET AREA
9.39 sq.m (101.07 Sq.ft.)

The information depicted herein viz., master plans, floor plans, furniture layout, fittings, illustrations, specifications, designs, dimensions, rendered views, colours, amenities and facilities etc., are subject to change without notifications as may be required by the relevant authorities or the developer's architect, and cannot form part of an offer or contract. Whilst every care is taken in providing this information, the Developer cannot be held liable for variations. All illustrations and pictures are artist's impression only. The information are subject to variations, additions, deletions, substitutions and modifications as may be recommended by the company's architect and/or the relevant approving authorities. The Developer is wholly exempt from any liability on account of any claim in this regard. (1 square metre = 10.764 square feet). E & OE.

All dimensions and calculations are done in metric system (M/ Sq.m), and imperial system (Ft/ Sq.ft) shown is for reference only.

TYPICAL 3 BHK UNIT



SUPER BUILT-UP AREA
176.32 Sq.m (1,898 Sq.ft.)

CARPET AREA
118.42 Sq.m (1,274.67 Sq.ft.)

BALCONY CARPET AREA
9.39 sq.m (101.07 Sq.ft.)

The information depicted herein viz., master plans, floor plans, furniture layout, fittings, illustrations, specifications, designs, dimensions, rendered views, colours, amenities and facilities etc., are subject to change without notifications as may be required by the relevant authorities or the developer's architect, and cannot form part of an offer or contract. Whilst every care is taken in providing this information, the Developer cannot be held liable for variations. All illustrations and pictures are artist's impression only. The information are subject to variations, additions, deletions, substitutions and modifications as may be recommended by the company's architect and/or the relevant approving authorities. The Developer is wholly exempt from any liability on account of any claim in this regard. (1 square metre = 10.764 square feet). E & OE.

All dimensions and calculations are done in metric system (M/ Sq.m), and imperial system (Ft/ Sq.ft) shown is for reference only.

FOUNDATION: Isolated/ Combined footing

SUPER STRUCTURE: RCC Framed structure

FLOORING (COMMON AREAS)

Waiting lounge /reception /GF Lobby /lift lobby: Granite/ Vitrified tiles

Staircases: Vitrified tiles/step tiles

Other lift Lobby and corridors (upper): Vitrified tiles

Terrace: Clay tiles

Basement: VDF with smooth finish

FLOORING (UNITS)

Living / Dining / Family / Foyer: Vitrified tiles

Master Bed room: Laminate wooden flooring

Other Bed rooms: Vitrified Tiles

Balcony: Anti skid ceramic tiles

Master Bedroom toilet: Ceramic tiles

Other Toilets: Ceramic tiles

Kitchen: Vitrified tiles

Servants room and toilet: Ceramic tiles

WALL DADO

Kitchen: Provision for modular kitchen

Master Bedroom toilet: Ceramic tile cladding up to false ceiling height

Other toilets and powder room: Ceramic tile cladding up to false ceiling height

Servants room toilet: Ceramic tile cladding up to false ceiling height

KITCHEN

Plumbing/Electrical: provision water purifier point, refrigerator point and microwave point

TOILETS

CP Fittings: Jaquar

Sanitary fixtures: Parryware

Master Bathroom: Glass partition for shower area

EWC: Wall mounted WC of Parryware for units, floor mounted in servant toilet

False Ceiling: Calcium silicate/syntex

DOORS

Main entry door to unit: Teakwood frame, Natural PU lacquer polish shutter and architrave

Bedroom doors: Hardwood frame, enamel paint shutter and architrave

Toilet door: Hardwood frame, enamel paint shutter and architrave

Balcony door: UPVC

Servant room and toilet: Hardwood frame with flush shutter

Servant room entry door: Hardwood frame with flush shutter

RAILING

Balcony railing: MS railing

WINDOWS: UPVC/ Aluminium

PAINTING & FINISHES

a) Exterior finish: External texture paint

b) Internal ceilings: Emulsion paint

c) Internal walls: Emulsion paint

WATER SUPPLY/DRAINAGE

a) Sewage Line: PVC

b) Water supply: Treatment- WTP

External piping: UPVC

Internal piping: CPVC

Flushing: STP treated water

c) Drainage:

External piping: PVC

Internal piping: PVC

AIR CONDITIONING

Living: Point and conduit provision with wiring for split AC

Master Bedrooms: Point and conduit provision with wiring for split AC

Bedrooms: Only conduit provision

ELECTRICAL

3 BHK: 6KW **2 BHK:** 5KW

Modular switches: Anchor Viola or equivalent make

LIFTS: Schindler

SECURITY SYSTEM & AUTOMATIONS:

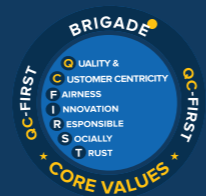
Provision for Intercom Facility (handset in customer scope)



Actual Show Flat



Our Core Values



Founders



Awarded
11 years in a row



To UPGRADE TO BRIGADE, reach us on 1800 102 9977 • email: salesenquiry@brigadegroup.com

Offices also at: CHENNAI • MYSURU • HYDERABAD